



Learn and be inspired.

Multiple Openings: 120

Adding Openings to a Multiple Opening Design

Instructor: Brian Wolf, CPF, GCF



Multiple Openings: 120

Adding Openings to a Multiple Opening Design

At last, in the history of picture framing, multiple opening mats are practical. The CMC has made it possible, and the Wizard design software makes it easy.

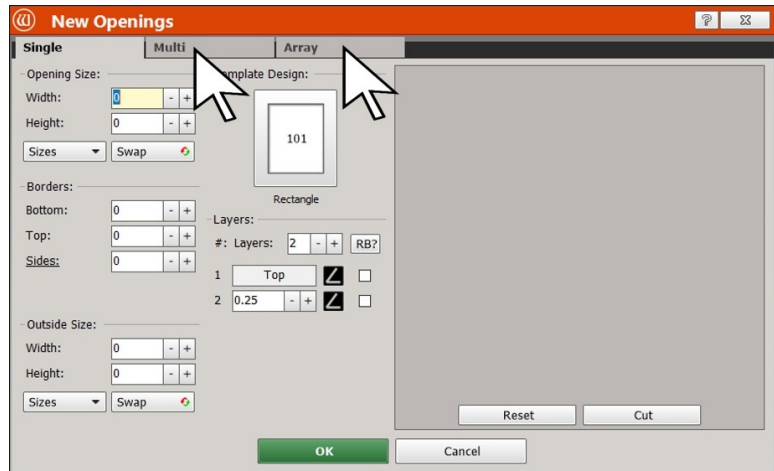
There will be several presentations to explain the multiple opening tools and processes. Each presentation is designed to answer specific questions that everyone has. The first question is how to add openings.

The Tabs of the New Openings Screen

Here on the **New Openings** screen, we all know how to add just one opening under the **Single** tab at the top left.

- ▶ Enter the **Size** of the opening, the **Border** widths or the **Outside Size**, set the number of **Layers** and the sizes of the **Reveals**.
- ▶ Then click either **OK** or **Cut**.

At the top, though, are 2 other tabs: **Multi** and **Array**.

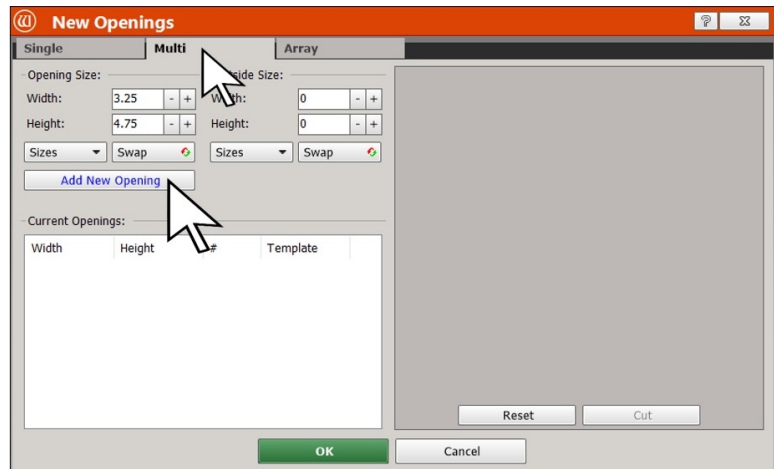


The Multi Tab

- ▶ Click the **Multi** tab.

Under this tab, you can enter any number of any size openings.

- ▶ Enter the size in the **Opening Size** fields.
- ▶ Click the **Add New Opening** button below and it will appear in the illustration at the right.





If you want more openings of this size, change the number in the table below.

- ▶ Click the number in the table beside the size.

A field with **Plus** and **Minus** buttons will appear, and you will be able to change the number of these openings.

Here there are three 3.25 x 4.75 inch openings.

Note: they are not in the most attractive of arrangements.

- ▶ Keep adding different openings by entering the size then clicking the **Add New Opening** button.

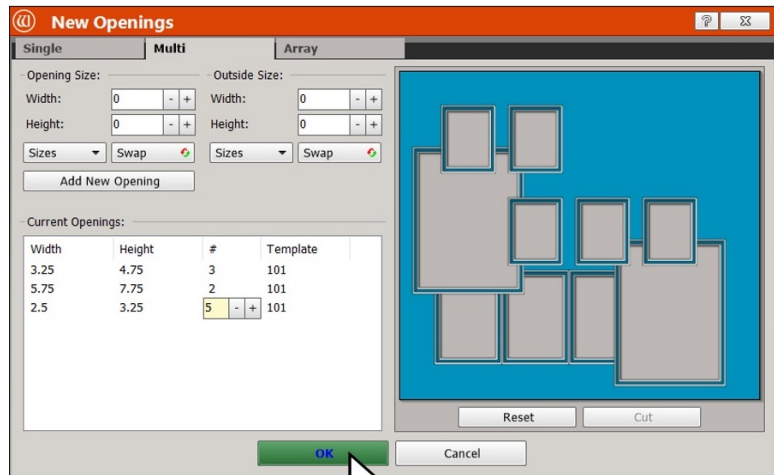
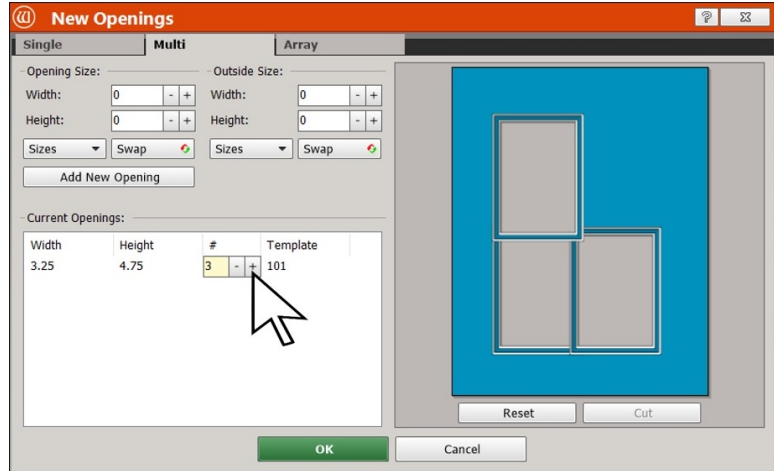
All the opening will have the default number of layers and reveal sizes. That can be changed in the **Edit** screen, but not here under the **Multi** tab.

It is possible to click the **Template ID** number beside an opening group and change the shape. But there is no access to the **Parameters** until we are in the **Edit** screen.

It is also possible to set the **Outside Size** on the **Multi** tab, but until the arrangement is completed, this may be a premature step.

The **Multi** tab is simply for adding all the necessary openings. The arrangement of the openings will be refined using the tools in the **Edit** screen.

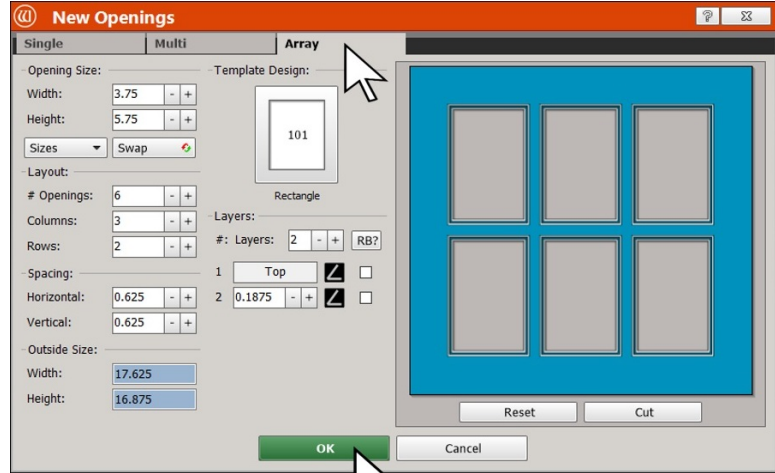
Once, all the openings for the project are in the table, click **OK** at the bottom to send the design to the **Edit** screen.





The Array Tab

- ▶ Now click the **Array** tab at the top. This is an impressive tool that adds and arranges any number of identical openings.
- ▶ Enter the **Opening Size** at the top left. Below, enter the **Number of Openings** you'd like. A proposed arrangement appears at the right.
- ▶ Change the numbers of **Columns** and **Rows** so that the arrangement suits the project.



To the right, there are fields to change the number of **Layers** and the sizes of the **Reveals**.

Above, you can click the **Template** icon and change the openings' shape, but once again, there is no access to the **Parameters** until the design is on the **Edit** screen.

*Whether it's the **Size, Layers, Shape, or Reveals**, remember that these are all identical openings—what you change for one, changes for all of them.*

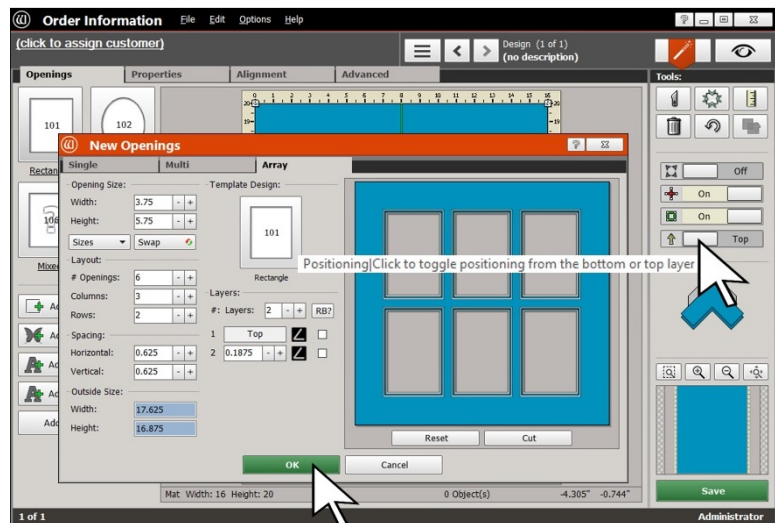
In the **Spacing** fields below, the **Horizontal** and **Vertical** can be set separately.

The Positioning Button

These are 2 layer openings. The question is now about spacing. Is the spacing measured from the top layer or the bottom layer?

Look to the right of this illustration. The **Edit** screen is under the **Array** screen.

The button with the arrow is the **Positioning Button**.





When the arrow points down, every alignment tool—these **Spacing** fields, too—will reference the bottom layer.

When it points up, as in this example, the alignment tools all reference the top layer.

*Since the **arrow is pointing up**, we know that there is 0.625 inches of the **top mat** in between the openings of this example.*

When the sizes, spacing and arrangement are correct, click **OK** at the bottom to send the design to the **Edit** screen.

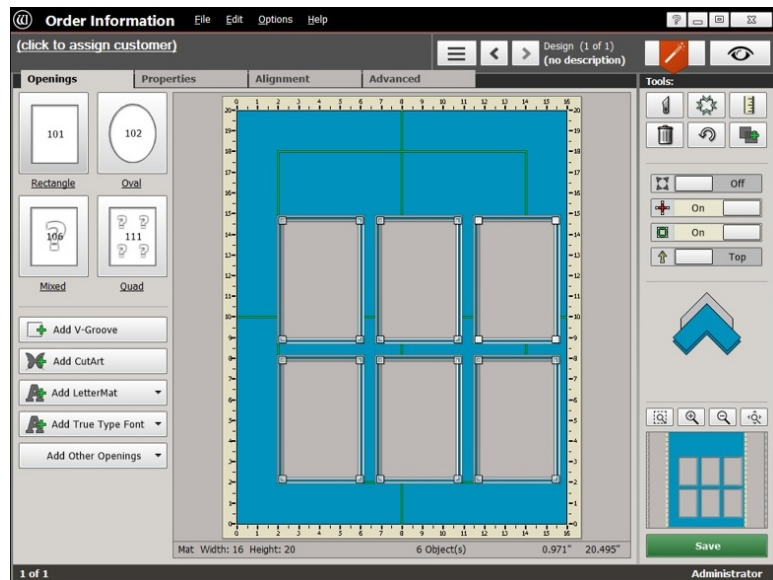
Here is the array on the **Edit** screen. This is where the final steps are in completing this project—setting the sizes of the mat borders and the outside size, for example—will be done. These will be explained in full detail in an upcoming presentation.

Deleting Openings

Here on the **Edit** screen, it is possible to make any necessary changes to the shapes, sizes, and placements of the openings.

It is also possible on the **Edit** screen to delete openings—often an important part of designing.

*First note that all the openings have the square handles at their corners, indicating that all the openings are selected. This is how the openings arrive into the **Edit** screen from the **Array** tool.*





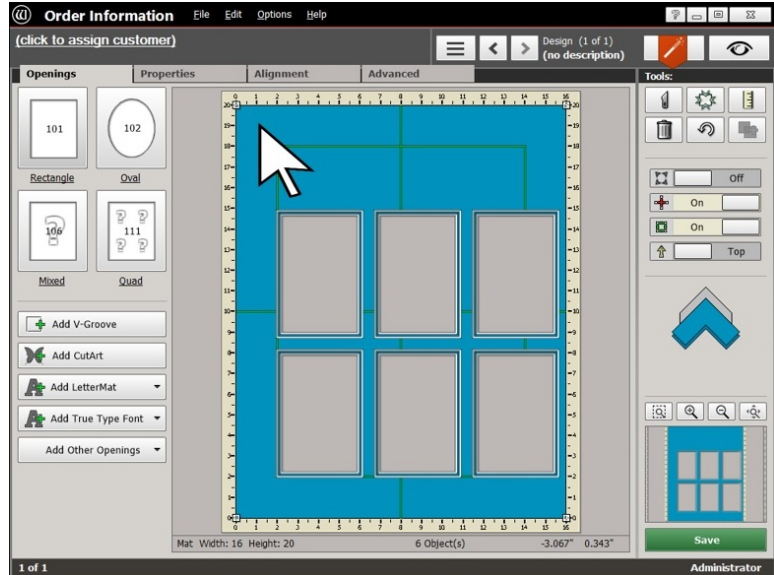
De-Selecting the Group of Openings

In order to delete just one opening, we need to select only that opening. However, in the previous illustration, all the openings are selected. If we click the **Delete** button now, they will all disappear.

To de-select the entire group, either click in the blue area outside the group of openings, or hit the **Escape** key on the keyboard.

All the openings will become de-selected.

Note: the square handles have all disappeared from the corners of the openings.



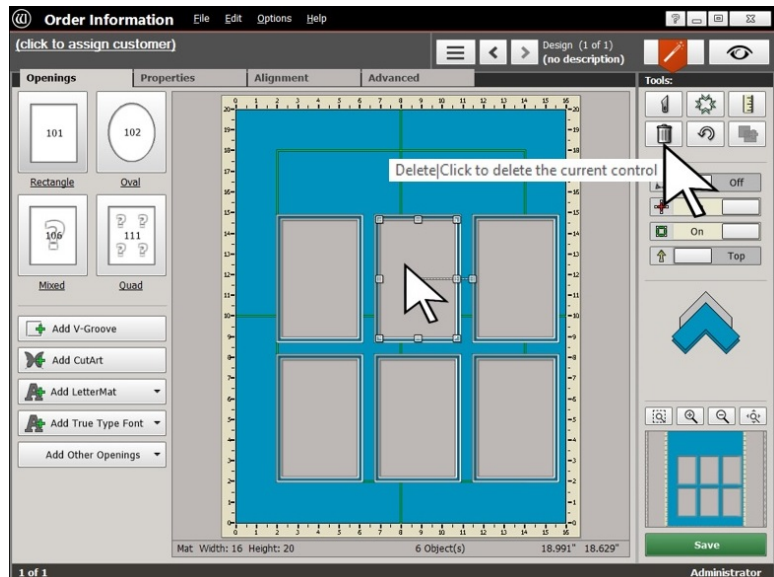
Deleting One Opening

- ▶ Click on just one of the openings.

The square handles will appear at its corners indicating that it is now selected.

- ▶ Click the **Delete** button (the garbage can icon) under **Tools** at the right.

The selected opening will be deleted from the layout.





Deleting Multiple Openings

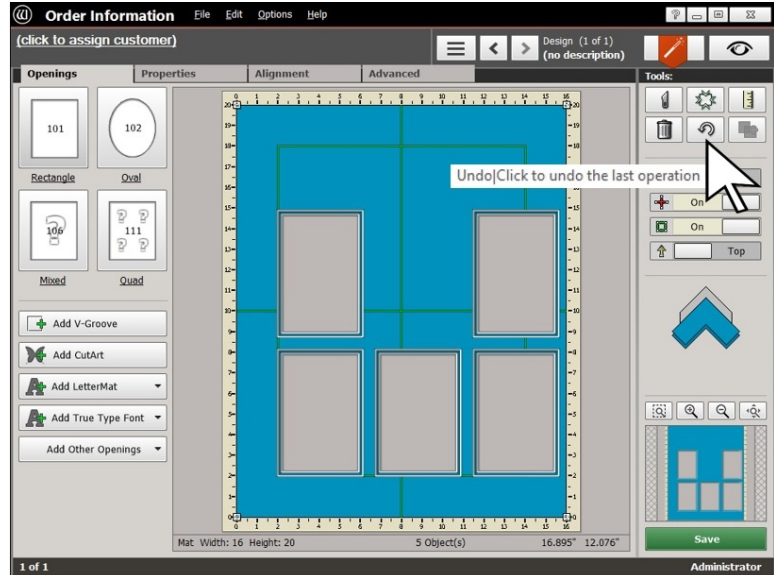
To delete multiple openings, select one, hold the **Shift** or **Control** key on the keyboard, and keep selecting all the openings you want to delete.

If you select an opening in error, click it again – keep holding the **Shift** or **Control** key the entire time—and it will become de-selected.

Click the **Delete** button and all the selected openings will disappear.

If you need to restore deleted openings, click the **Undo** button at the right.

*You are able to click the **Undo** button, and undo an infinite number of operations.*



Adding Openings from the Edit Screen

There are the 3 ways of adding openings from the Edit screen.

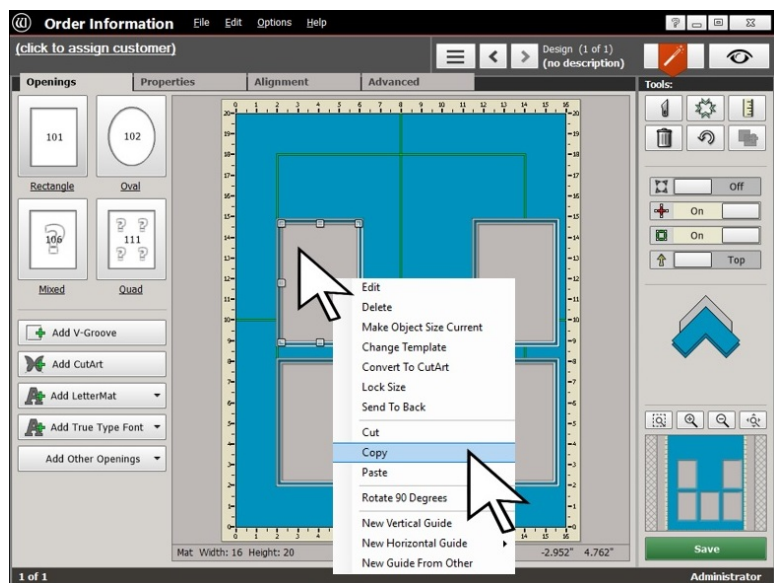
Copy and Paste

It works just like copy and paste in any other computer program.

You can right-click on an existing opening and choose **Copy** from the menu that appears. Then right-click again, and select **Paste** from the menu.

Or you can click **Edit** at the top and again choose **Copy**.

Click **Edit** again then choose **Paste** from the menu.





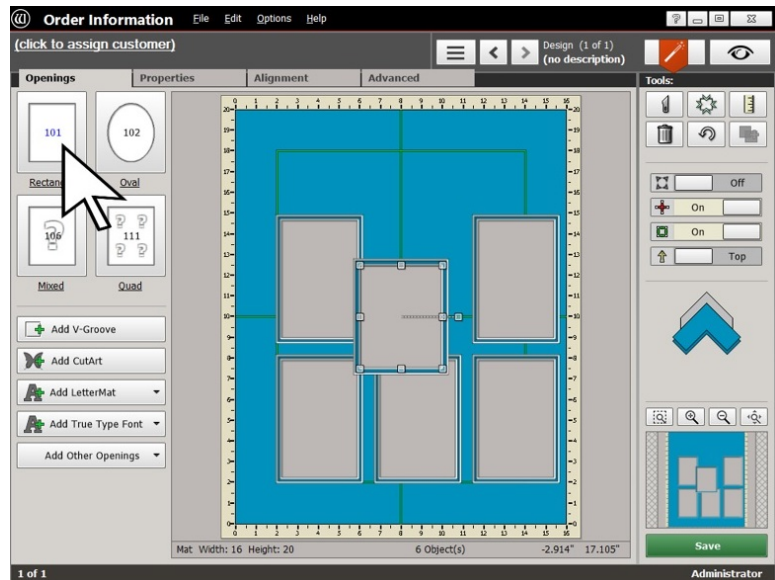
Or select an opening and use **Control+C** on the keyboard to copy and **Control+V** to paste.

And like any other computer program, you can continue to paste to generate new openings as many times as you'd like.

The Template Selection Icons

- ▶ Click the **Openings** tab at the top left. There are template icons at the top left.
- ▶ If you want to add another rectangle, either click on the rectangle icon, or simply click and drag it into the work area.

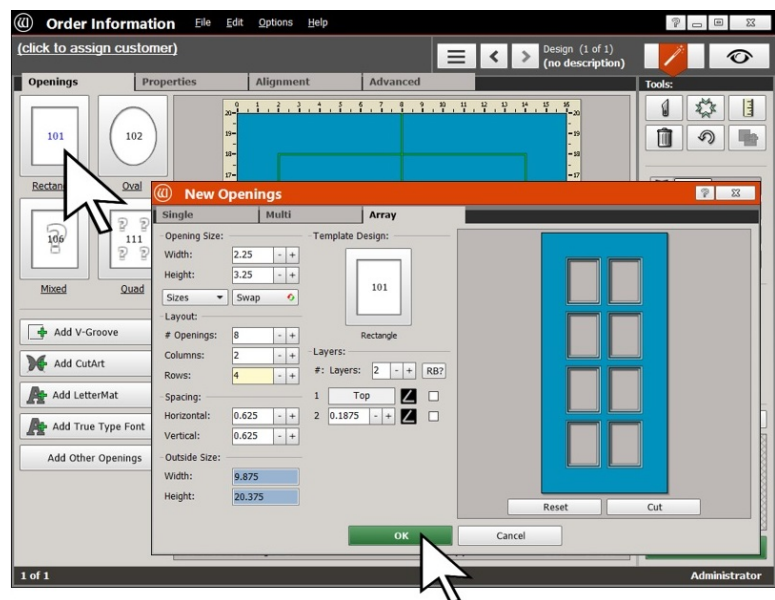
A default size opening will appear in the work area.



Adding an Array

You can add an array of new openings to the design, too.

- ▶ Right-click on the rectangle icon (or any of them). The **Array** screen will open.
- ▶ Enter values just as before to specify the openings and arrange them.
- ▶ Click **OK** at the bottom.

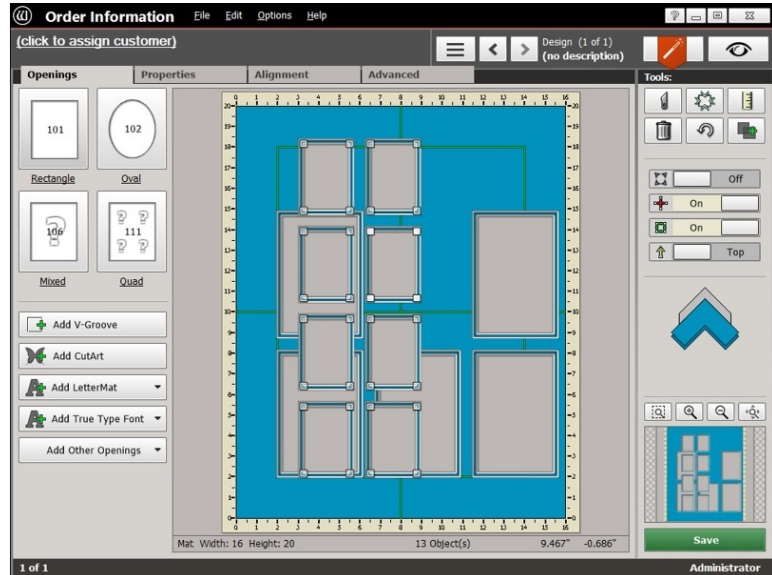




The new array will appear in the design along with the openings that were previously in the design.

The openings are all in the work area of the **Edit** screen. The next step is to arrange them into the final design.

The complete explanation of **Aligning and Spacing Openings** is coming soon.



Things to Remember

The first question about multiple opening designs is: **“How do you get all the openings you need?”** But regardless of where you are in the design process, no matter which screen you are on, it is always possible to add openings.

- ★ Remember the tabs on the **New Openings** screen—especially **Array**.
- ★ Remember **Copy** and **Paste** on the **Edit** screen, and that you can right-click on a template icon to add an **Array** of openings that are already arranged.
- ★ The **Positioning** button was explained in passing. Understand the differences in its settings for later. It will loom larger in discussions about arrangements and spacing in the future.
- ★ If adding openings is important, then so is deleting them. It’s pretty simple, and there is always the **Undo** button too.

